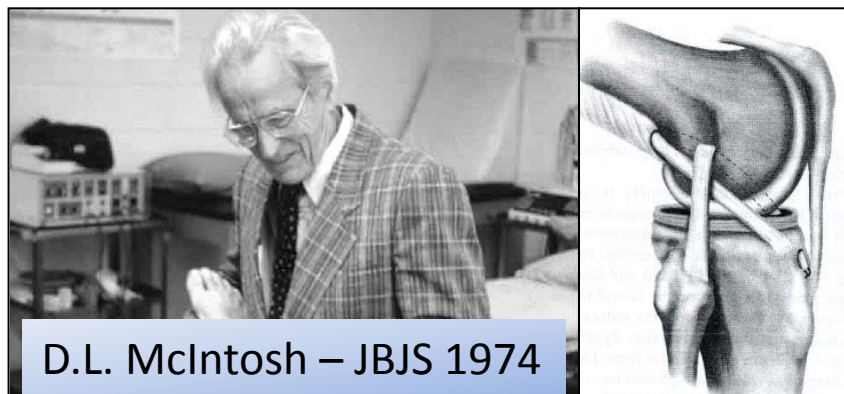


Technique de Mc Intosh au fascia lata sous arthroscopie

Dr Christian LUTZ



D.L. McIntosh – JBJS 1974

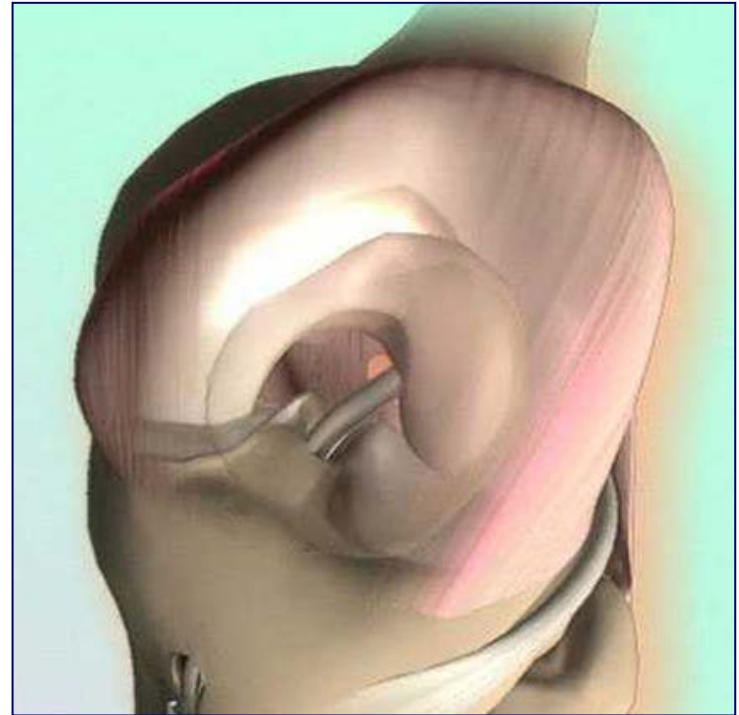


29 et 30 Janvier 2015
Surgical Skills Centre YORK, UK

SFA MASTER COURSE
GENOU 2015

Principe

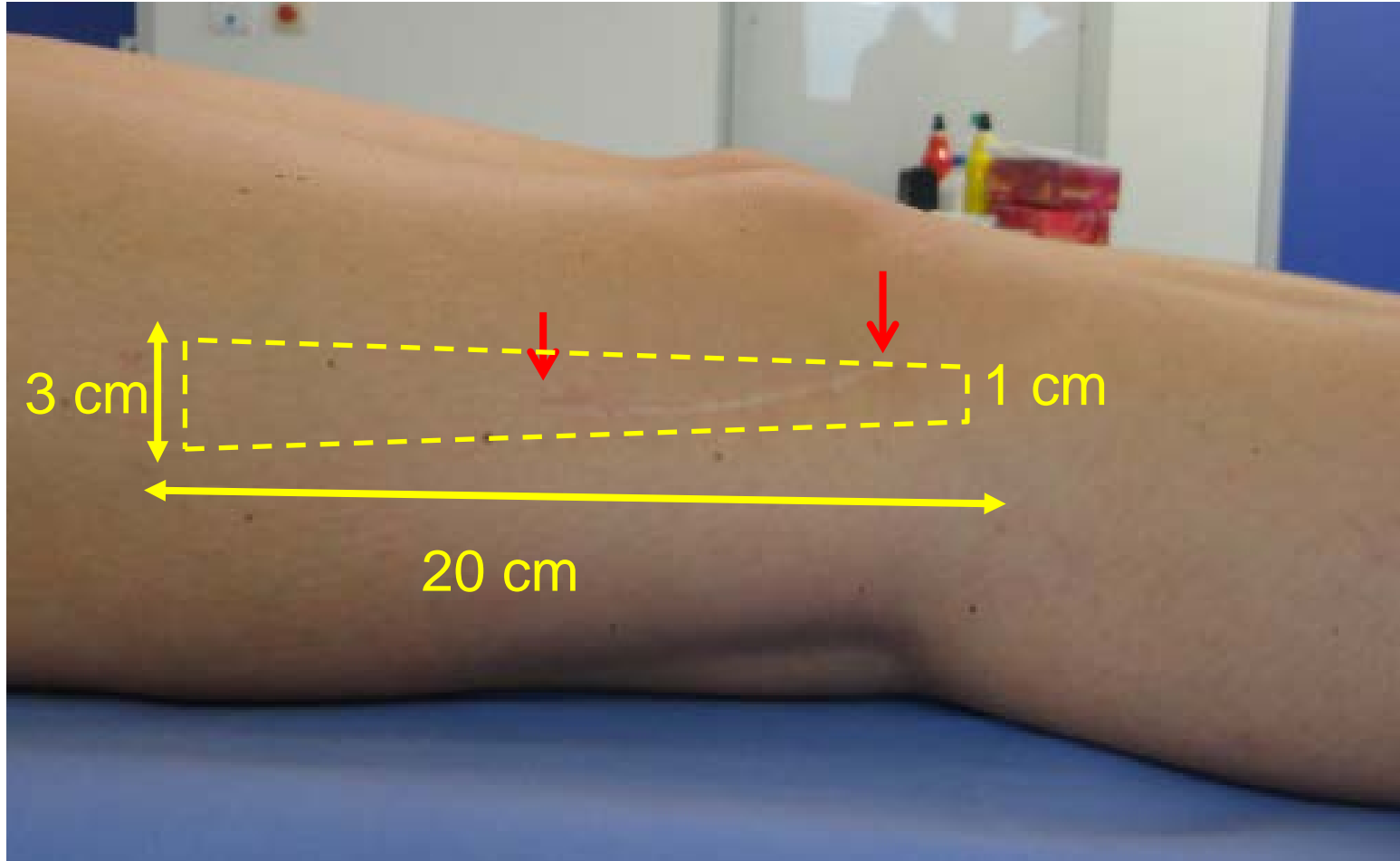
- **Plastie mixte**
 - intra + extra-articulaire
- **mono-transplant**
 - fascia lata
- **continue**



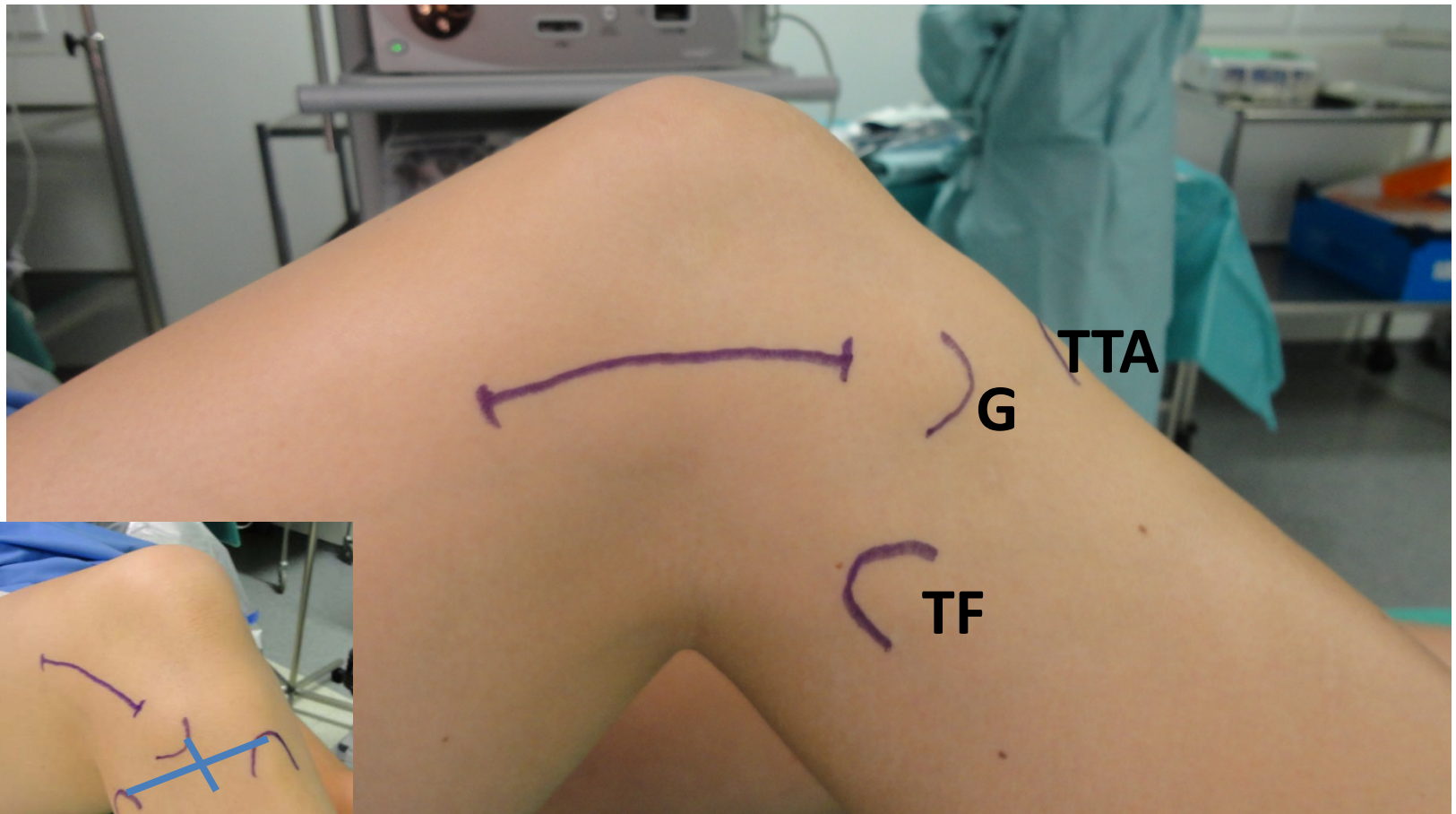
Installation



Prélèvement



Prélèvement



Prélèvement



Prélèvement



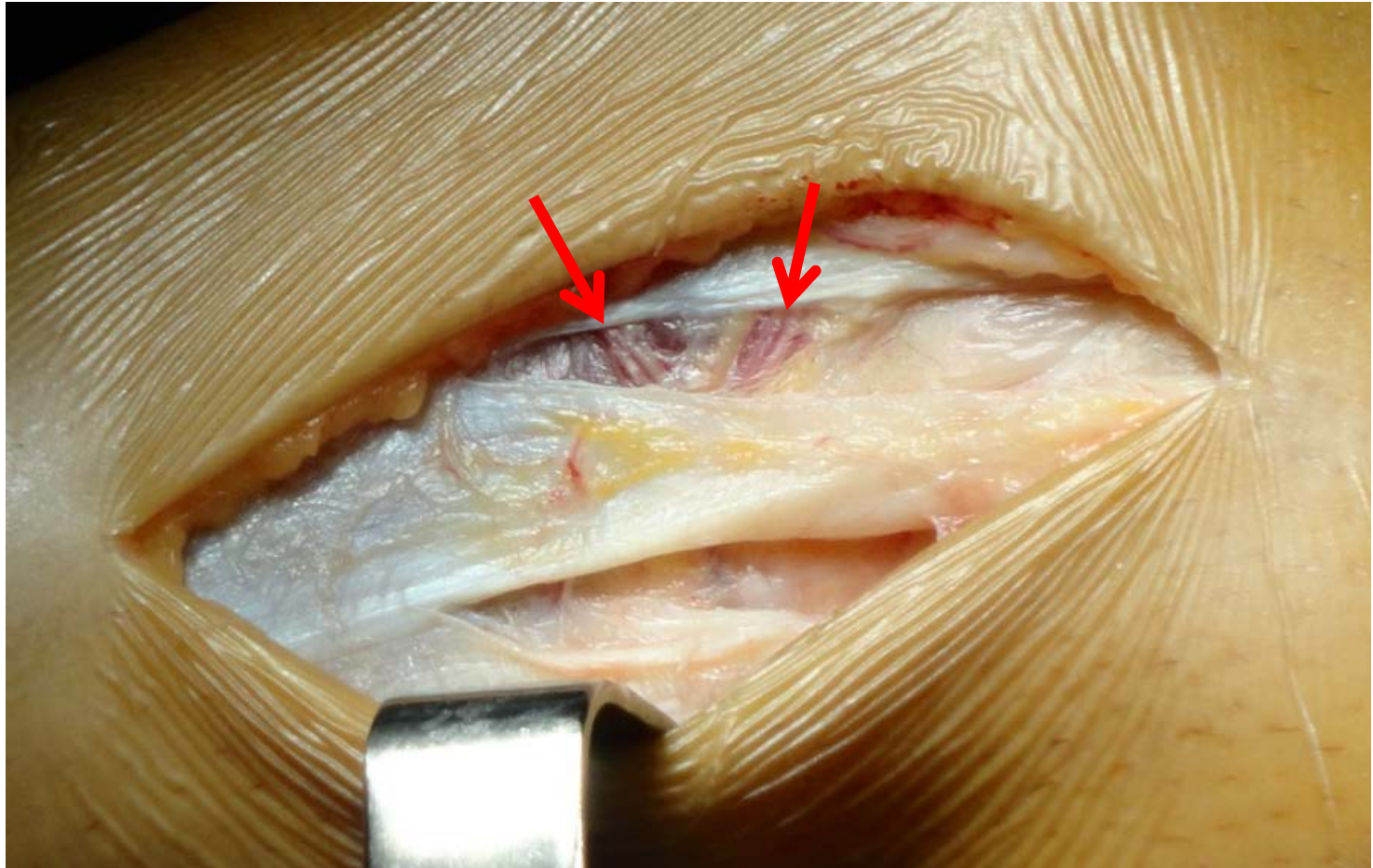
Prélèvement



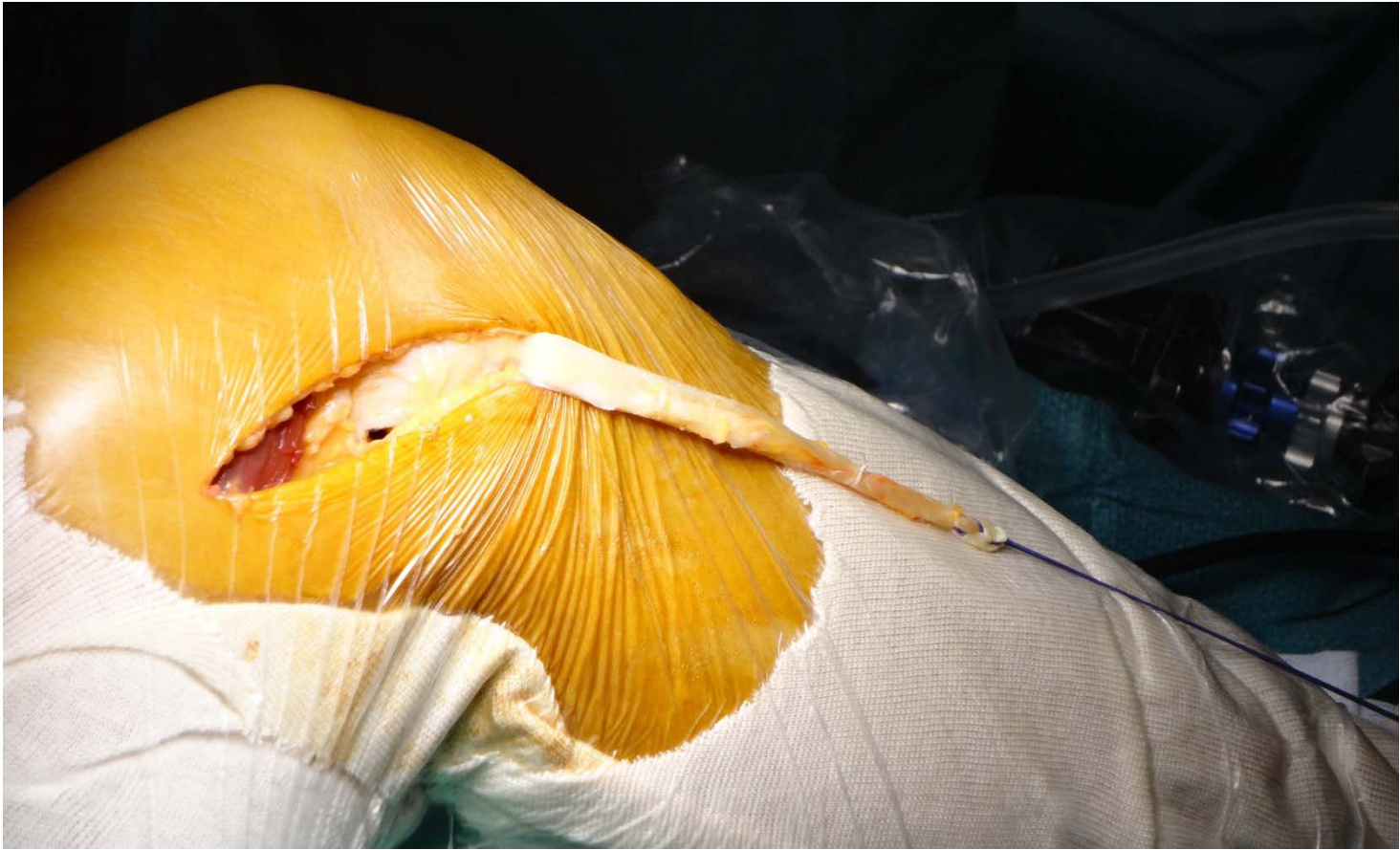
Prélèvement



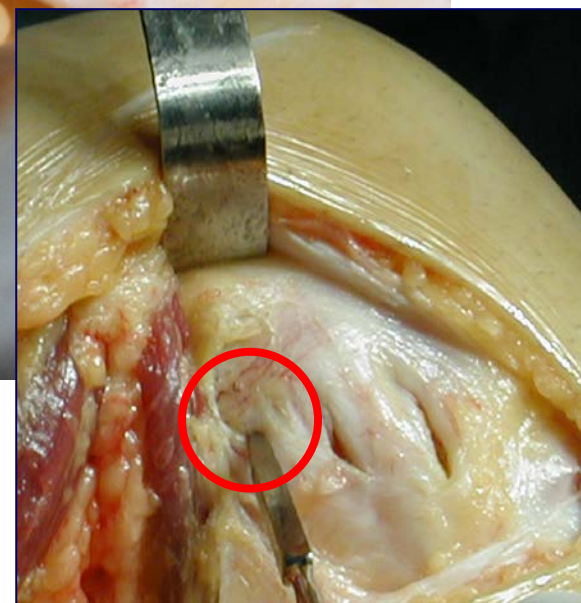
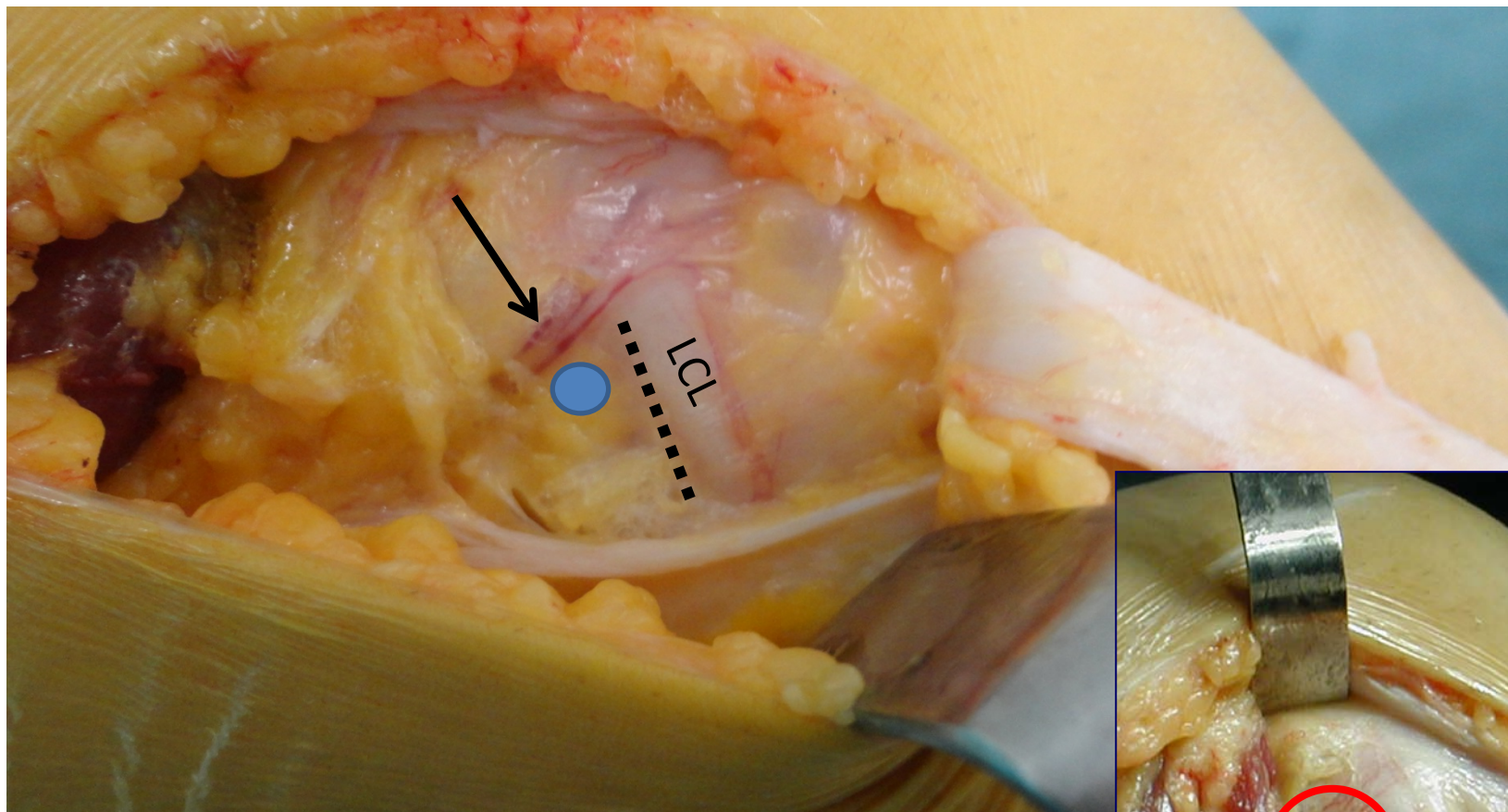
Prélèvement



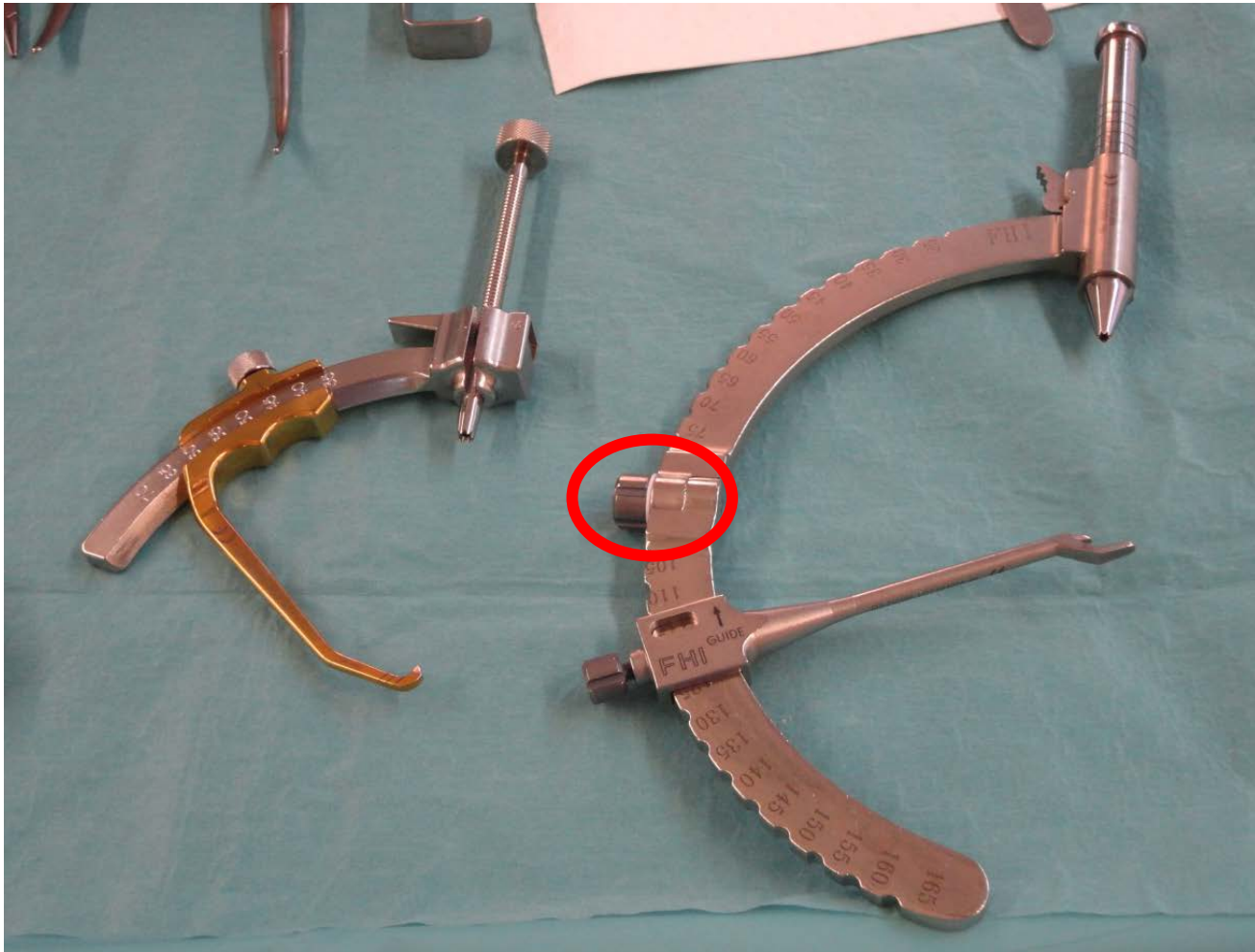
Tubulisation



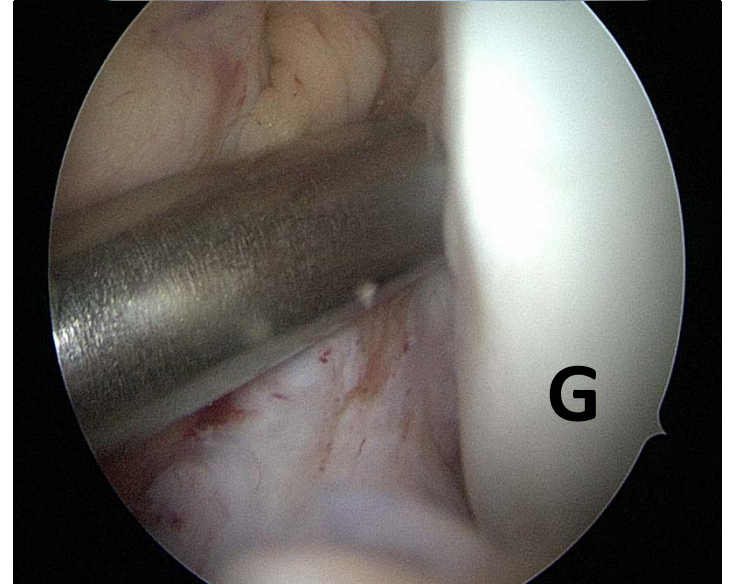
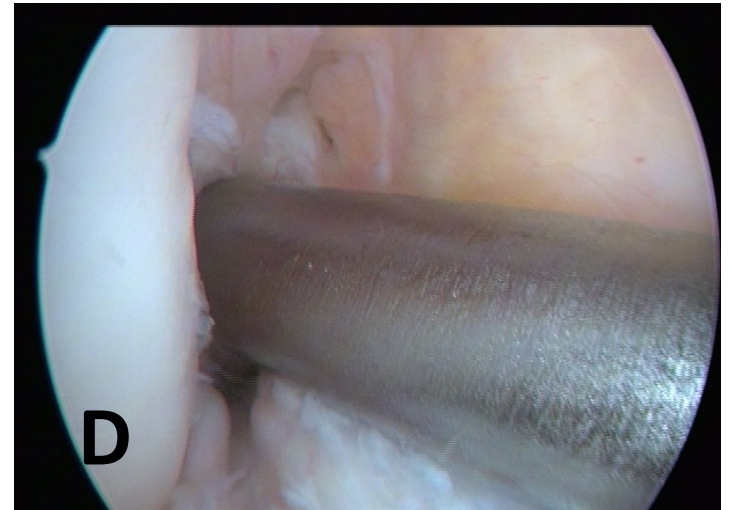
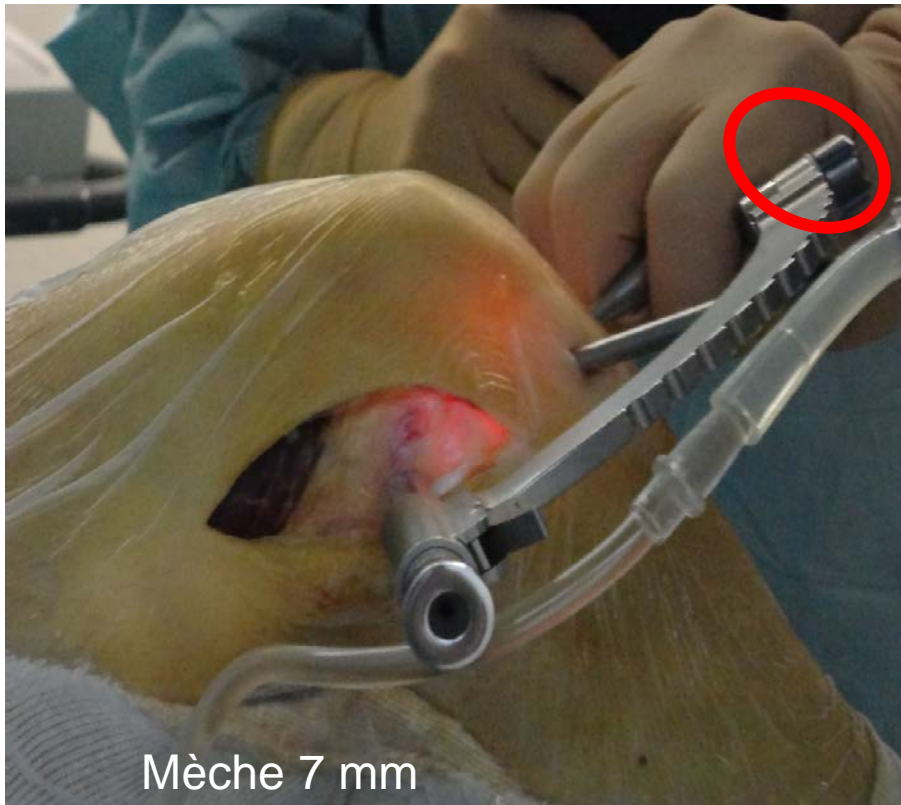
Repérage point « isométrique » tunnel fémoral



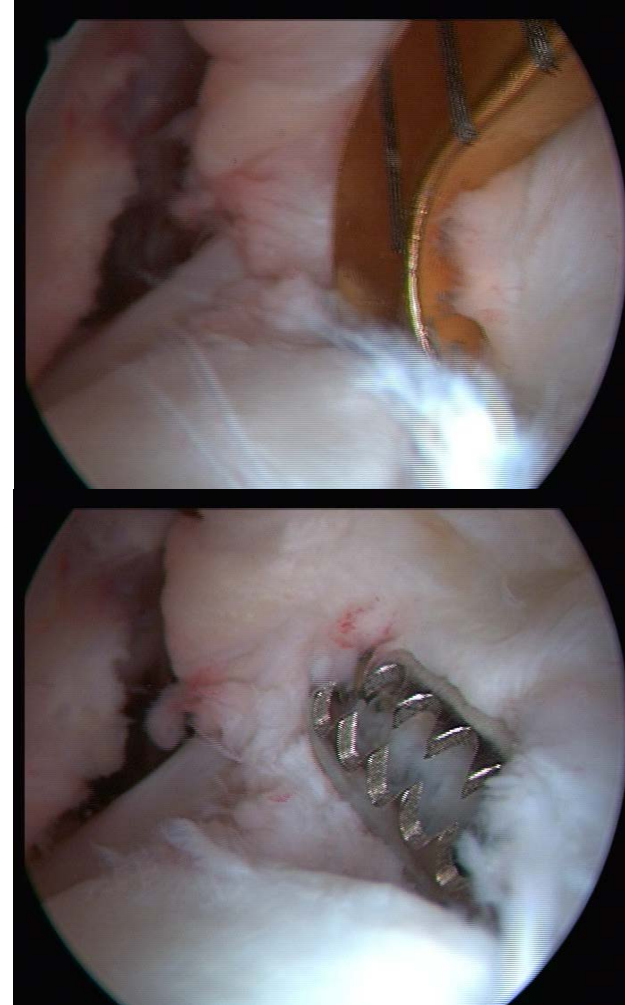
Réalisation tunnels osseux



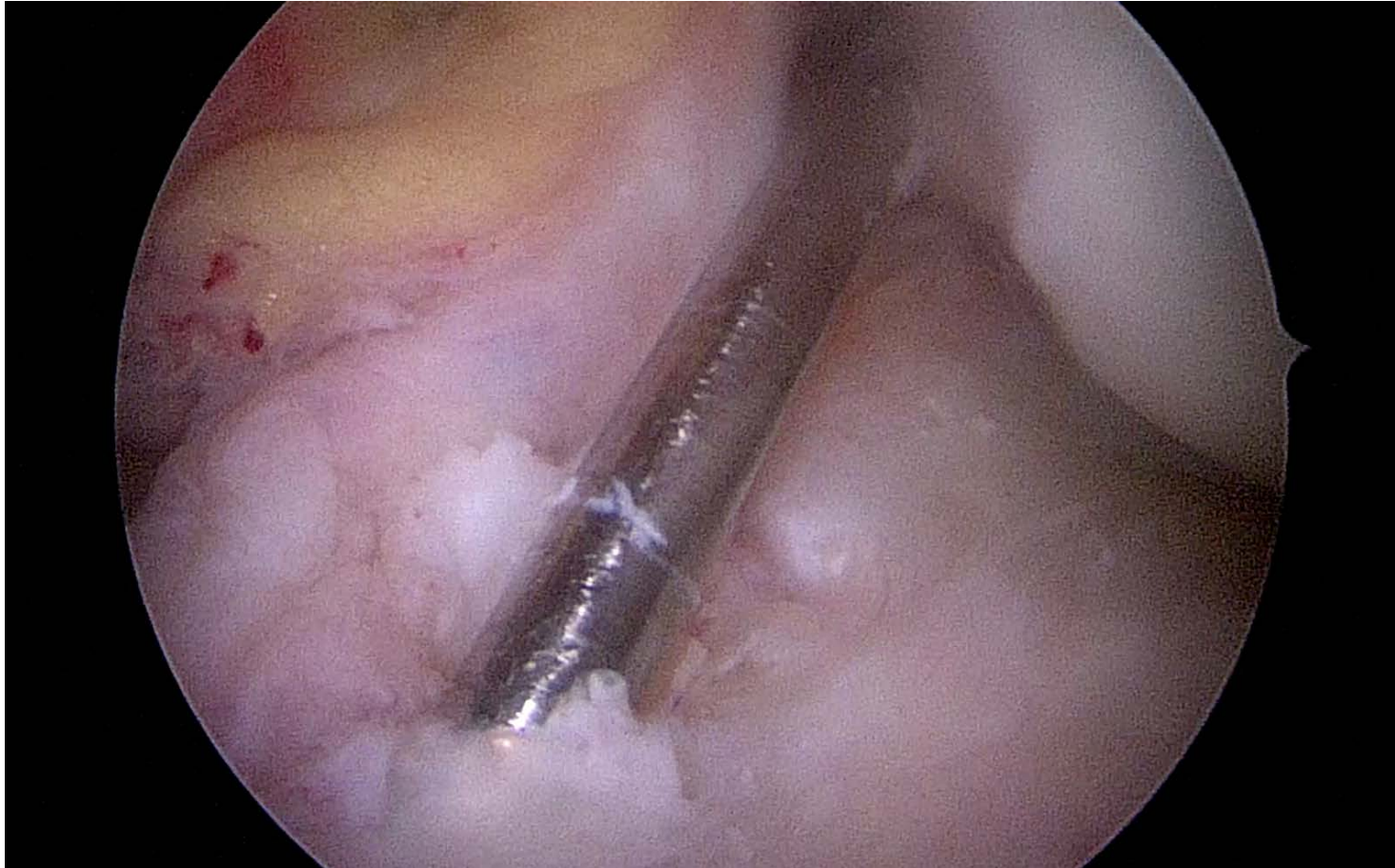
Tunnel osseux fémoral



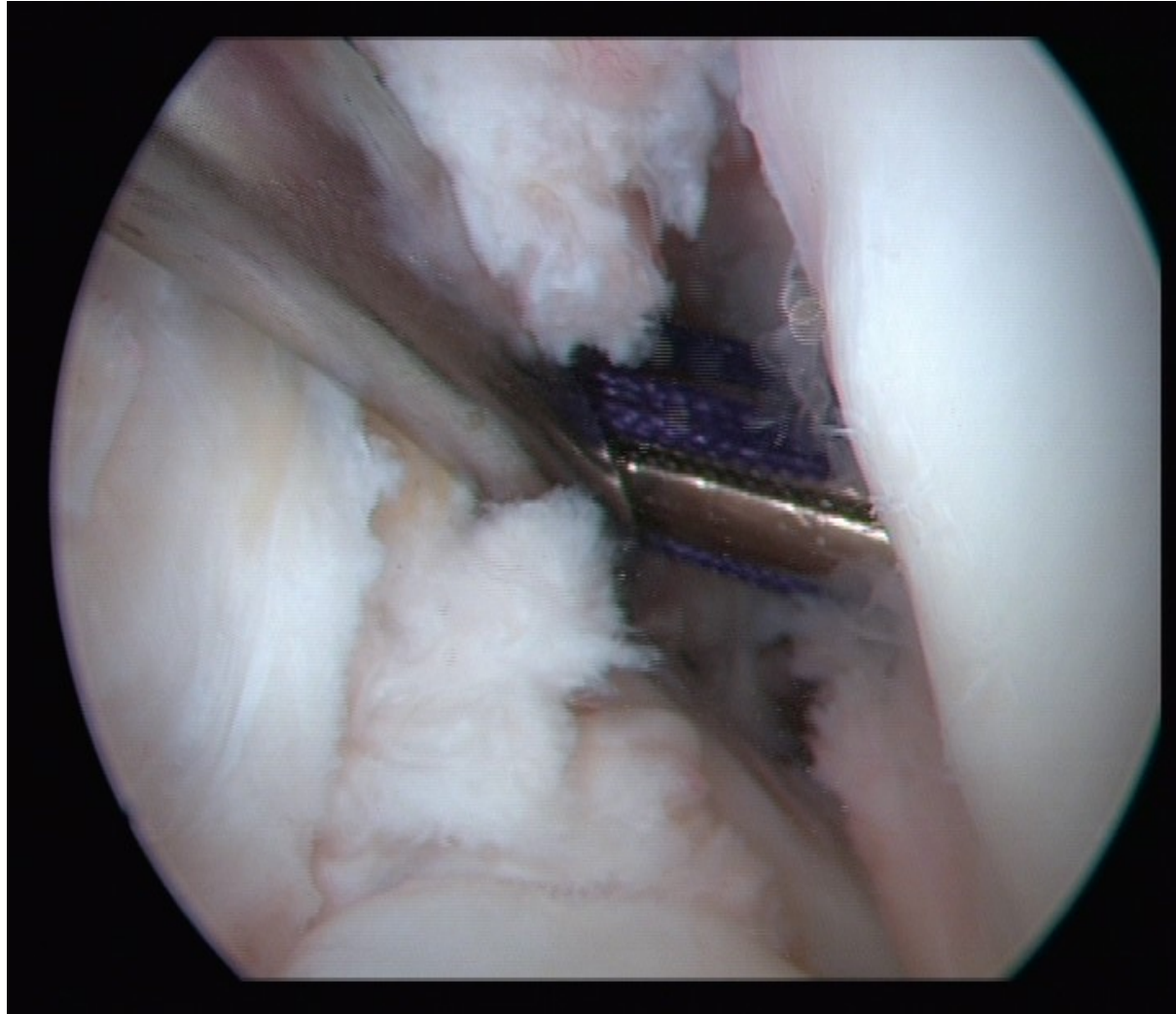
Tunnel osseux tibial



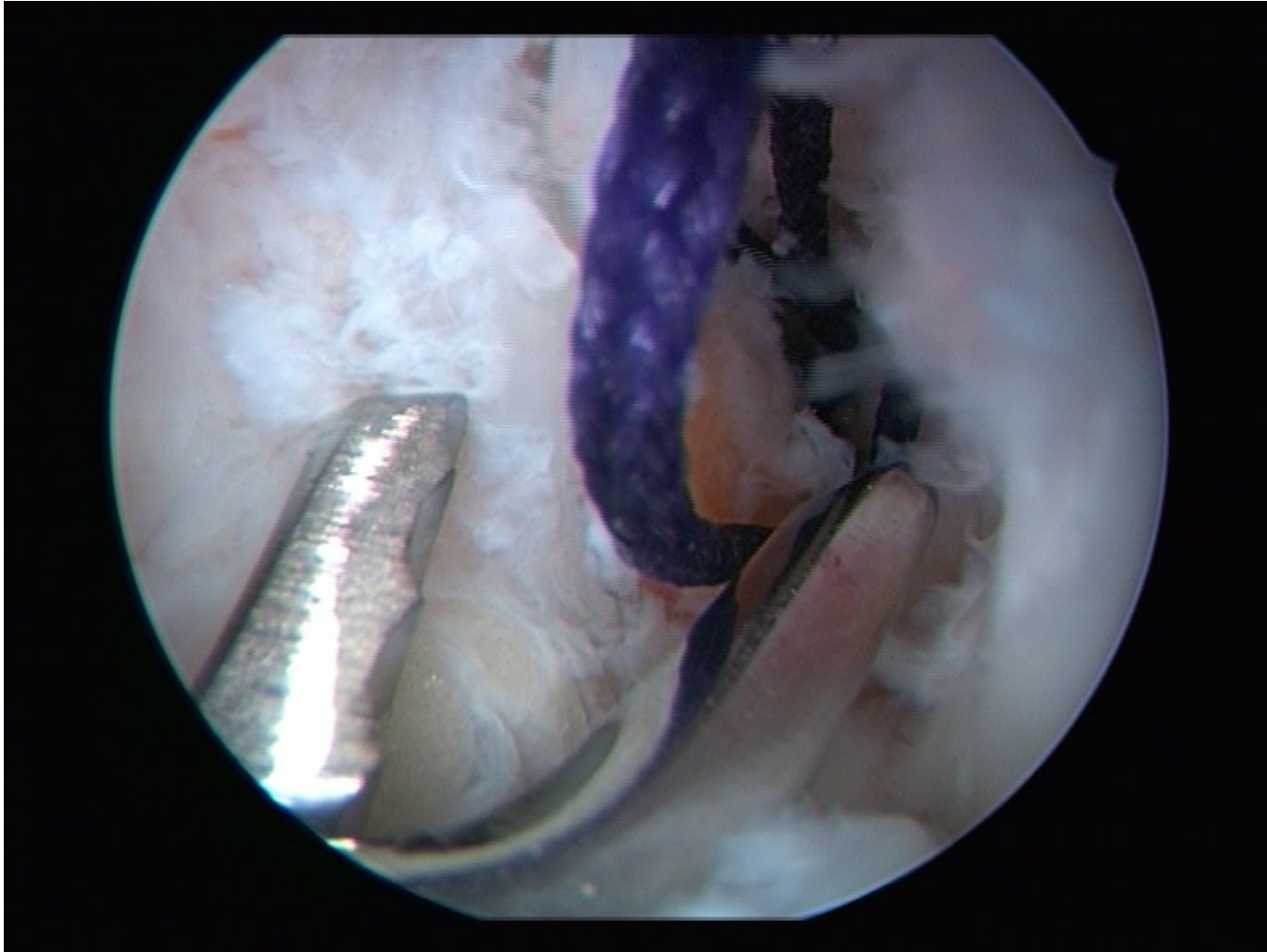
Tunnel osseux tibial



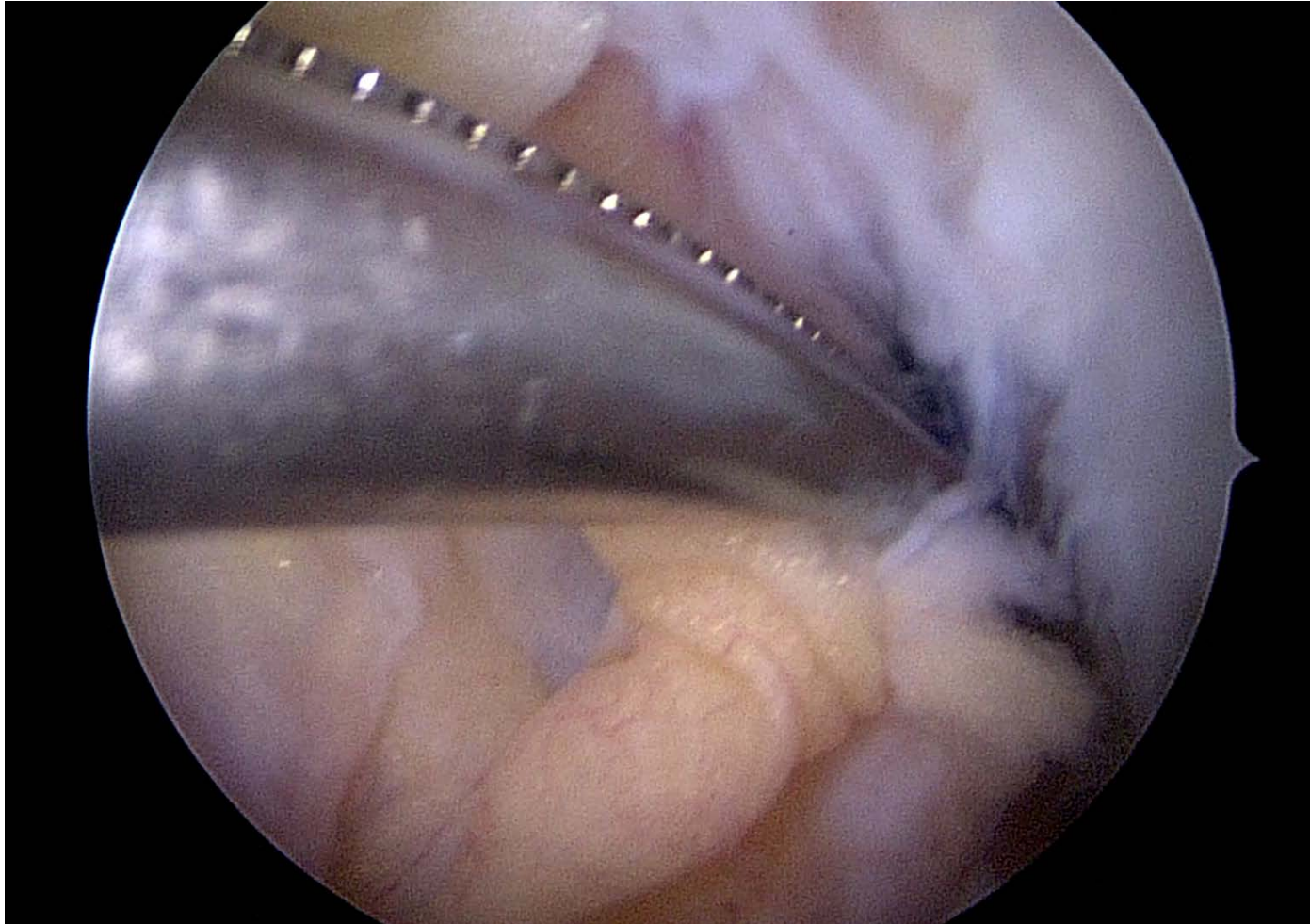
Passage transplant



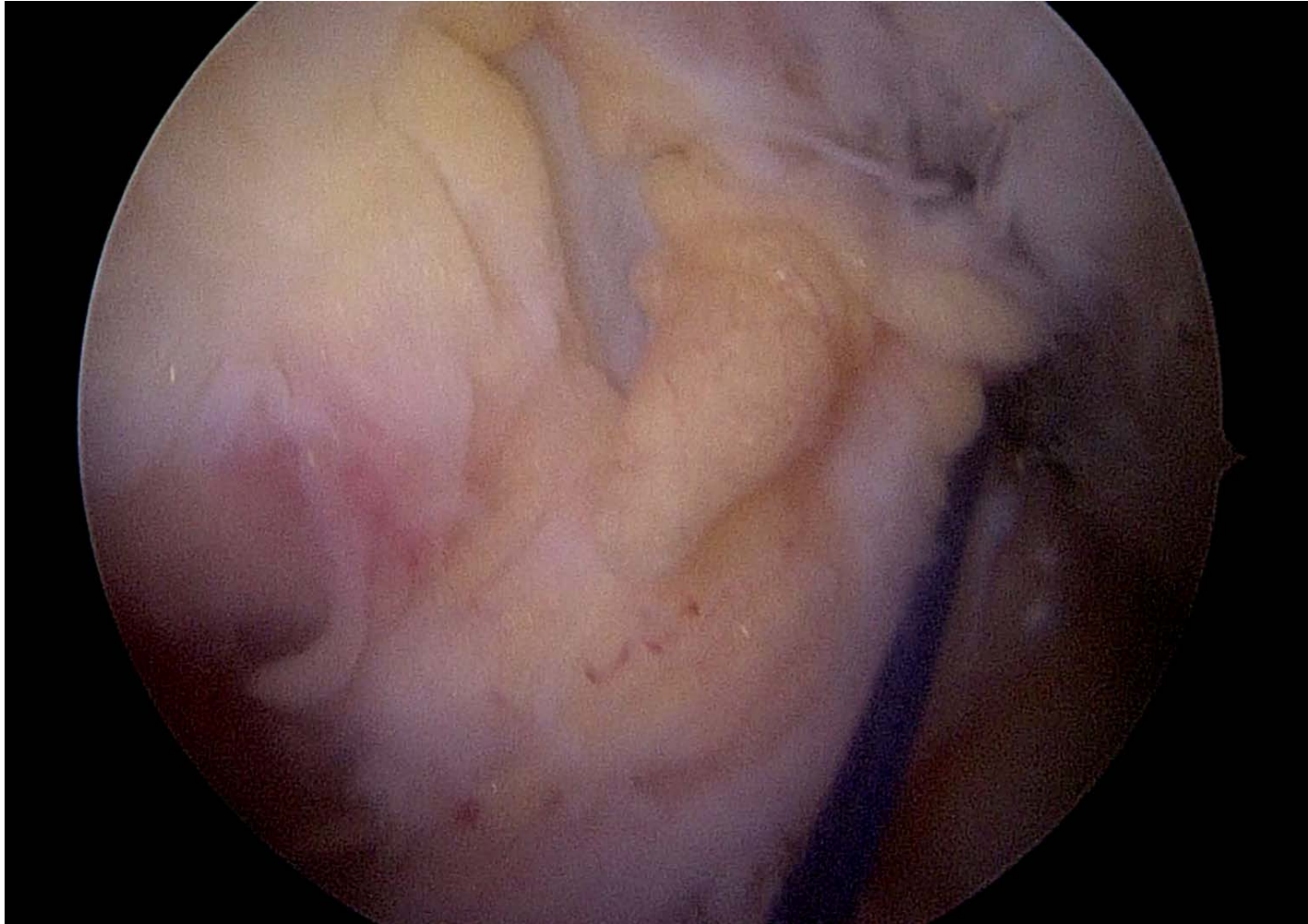
Passage transplant



Passage transplant



Passage transplant



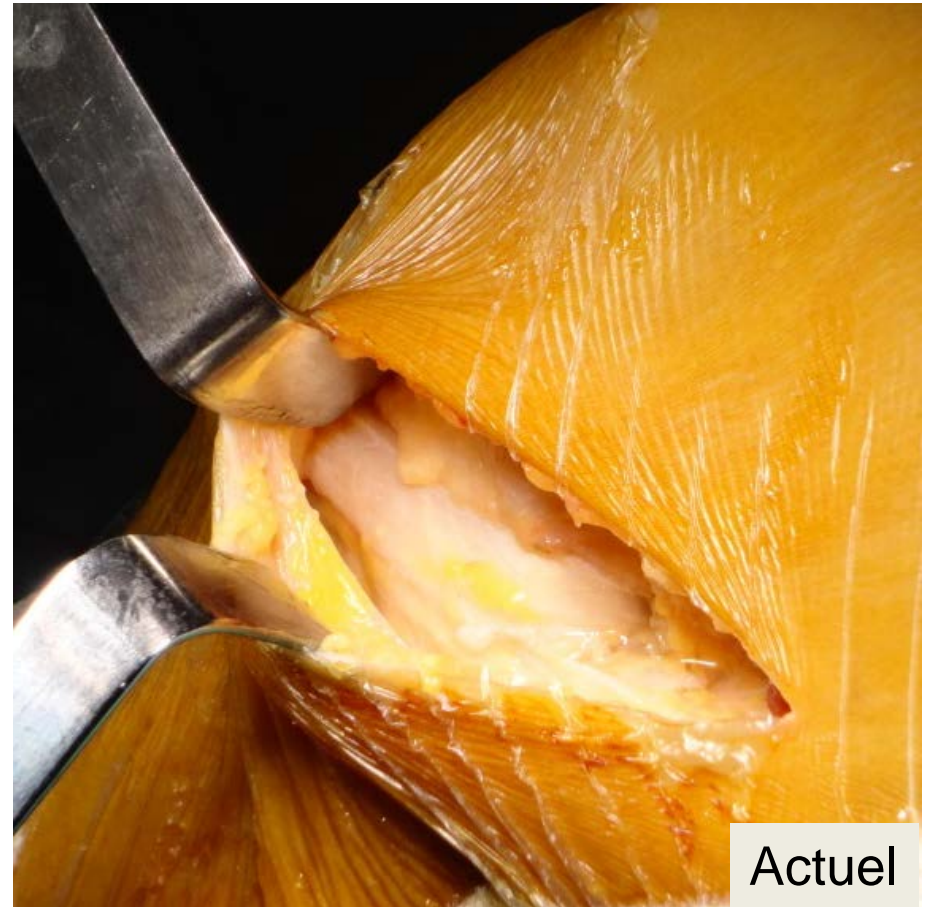
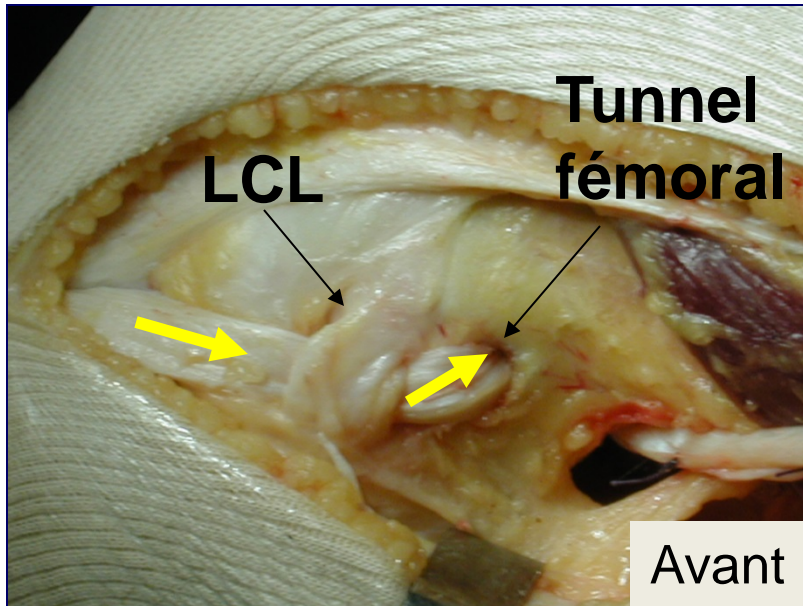
Vérification isométrie



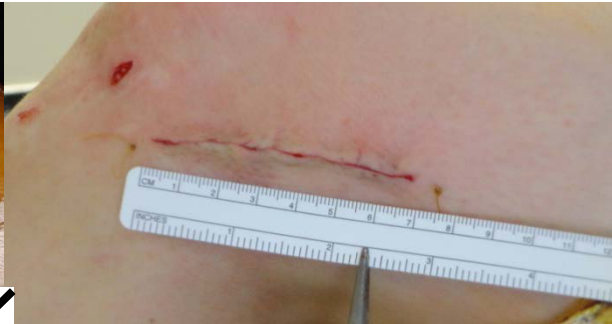
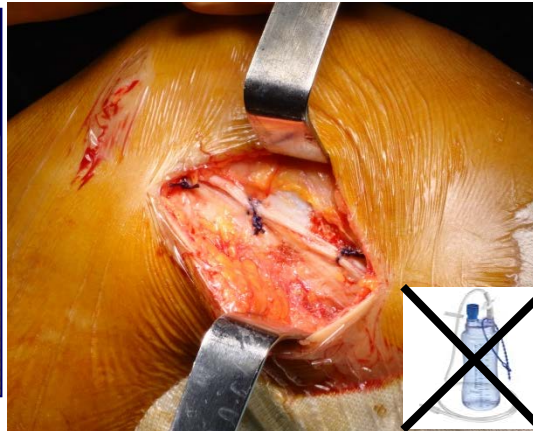
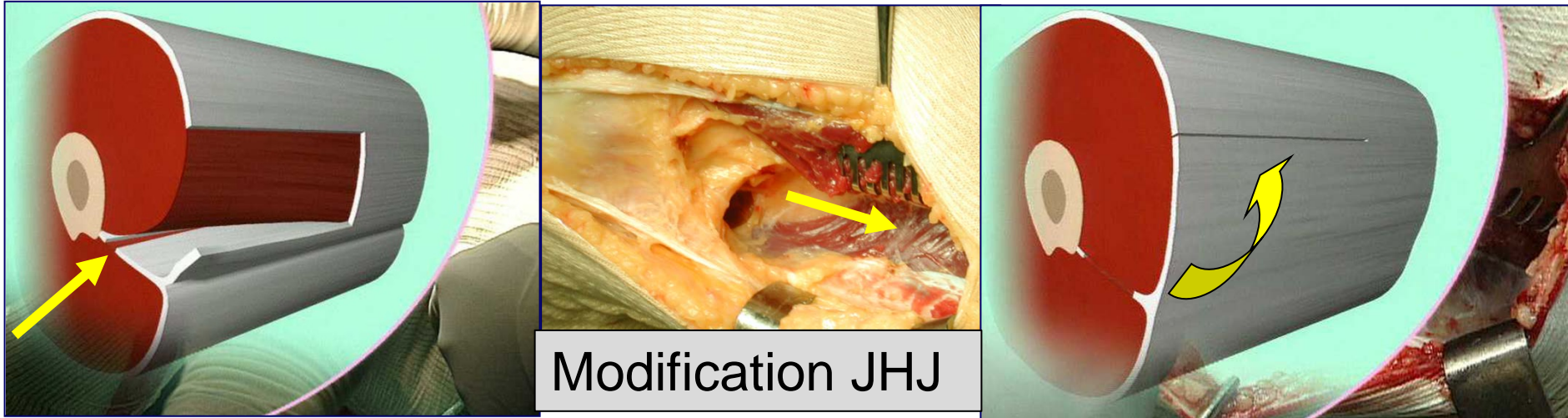
Fixation



Partie extra-articulaire



Fermeture



Rééducation

- Hospitalisation \Rightarrow ambulatoire ou sortie J1
- Appui \Rightarrow complet
- Mobilisation \Rightarrow immédiate sans limitation
- Attelle + Cannes \Rightarrow 2 semaines